

# RuggedPC review.com

## GETAC E100

### LIGHTWEIGHT RUGGED TABLET PC WITH GREAT DISPLAY

By Conrad H. Blickenstorfer, July 2008

Getac introduced the E100 in early 2008 as a light, versatile rugged Ultra Portable Tablet PC for field and customer service applications. It's handy for sure, with a footprint smaller than that of a standard sheet of paper, and it weighs just a bit over three pounds. It feels sturdy, too, thanks to a magnesium housing, and the integrated numeric keypad makes rapid data entry easy. Four thick rubber bumpers clearly communicate that you don't have to baby this machine, it can take and survive a fall. You also quickly notice that the E100 is totally silent. There is no fan. Then you find out that this rugged little tablet also comes with a Smart-Card reader, an ExpressCard slot, and that it can be equipped with integrated GPS and your choice of 3G wireless network connectivity, and things start looking quite interesting. Oh, and the display is sunlight-readable and the battery is strong enough to last almost four hours.

#### Built around McCaslin

McCaslin is the name of an ancient Irish/Scottish family, and also the code name of the processor in what Intel calls its Ultra Mobile Platform 2007 and describes as an "innovative collection of energy-efficient silicon building blocks and technologies designed to enable manufacturers to deliver a new category of small, truly mobile devices." There are two processors in that family—the super-efficient A100 and the somewhat punchier A110. The A110, which qualifies as an ultra low-power design, runs at 800MHz, has a 400MHz Front

Side Bus, a small 512KB L2 cache, and a low TDP (Thermal Design Power) of just three watts. The processor is based on the tried and true Intel Pentium M architecture. It uses a 90 nm design (compared to the 45 nm technology in Intel's recently released "Atom" processors) and has seen duty in such innovative machinery as the HTC Shift, and now the Getac E100.

It'd be interesting to learn Getac's reasoning for selecting the A110. When it comes to mobile computers, size, weight, performance and battery life are all mutually exclusive and thus require optimization in the form of a series of carefully chosen tradeoffs. It's a quest for the best possible balance, with the goal of creating

a device that is small and light, yet offers good enough performance and battery life. Each component—processor, display, hard disk, memory, etc—consumes so and so much energy and it all adds up to power consumption in watts. Now multiply the battery's voltage by its current and you get watt-hours. A Core Duo or Core 2 Duo processor has a power dissipation or Thermal Design Power (TDP) of about ten watts. A Core Solo processor lowers that to about 5.5 watts, and even that is still a lot compared to the A110's thermal design power of just three watts.

To put this in perspective, the E100 has a control panel that shows a variety of power



statistics, including overall current power consumption. This is shown in the picture to the right. The last line shows that the machine draws just under ten watts. The E100's battery runs on 7.2 Volts and a current of 5,200 mA.H.

Multiply those two numbers and since volts x amps = watts, you get 37.5 watthours. Divide those 37.5 watthours by the ten watts the E100 draws, and you'd get a battery life of about 3.75 hours which is roughly what the machine gets.

Now assume Getac had chosen a common Core 2 Duo processor, like the 1.2GHz U2500. With the processor drawing 10 instead of three watts, this would raise power consumption to 17 watts and reduce battery life to just over two hours. Do the math for a Core Solo with its 5.5 watt TDP and battery life would be three hours flat. So if battery life matters, then choosing the thrifty A110 processor makes sense. But what about the new Intel Atom processors that run faster and consume even less than the A110? Well, technology moves on. The A110 was available when Getac designed the E100, and the Atom was not.

What it really boils down to is whether the A110 processor is fast enough for the kind of applications customers use. The chip does not rival Core processors in any benchmarks, and was not meant to, but the Getac E100 feels quick enough in everyday use.

|                       |             |
|-----------------------|-------------|
| Manufacturer:         | GETAC       |
| Device Name:          | Generic     |
| Type:                 | Lithium Ion |
| Design Capacity:      | 5100 mAh    |
| Full Charge Capacity: | 4632 mAh    |
| Remain Capacity:      | 3440 mAh    |
| Voltage:              | 7706 mV     |
| Charge current:       | -1292 mA    |
| Power Consumption:    | 9.956152 W  |

## Excellent display

One interesting thing about Getac is that the company tends to understate the capabilities of its products. The screen of the E100, for example, is simply described as a "8.4-inch TFT SVGA transmissive display." It is that, but quite a bit more. Whereas other manufacturers of rugged equipment highlight the anti-reflective treatment and coating qualities of their displays, Getac doesn't mention daylight readability at all. You can get a superbright 800 nit display as an option and that is billed as sunlight readable. Ours didn't have the high-bright display and it was sunlight readable anyway. Judging by our experience with other sunlight readable displays, the E100's display definitely has both anti-reflective properties as well as anti-glare coating. You can clearly read it even in bright and direct sunlight. Not every display is sunlight readable and if I were Getac, I'd highlight that quality.

At the bottom of the page you can see the E100 in bright sunlight mid-day in early June. The display remains readable and there are none of the discolorations that often mar coated displays.

Below is a comparison between the Getac E100 and an older notebook convertible (Toshiba Portege 3500) that does not claim to

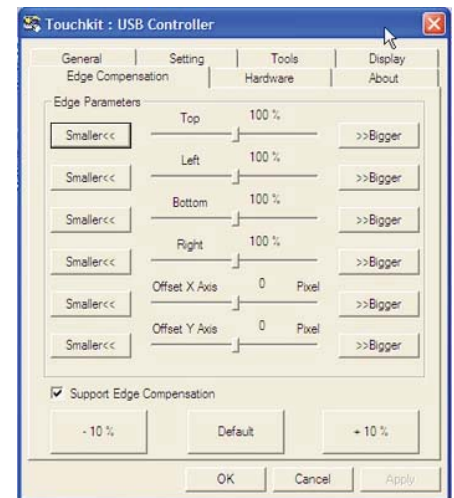


be outdoor readable. This picture was taken at noon in the shade. You can see not only the brightness of the display, but also its clarity.

## Touch screen

While dual panel input (both digitizer and touch) has become popular as of late with high-end units, Getac decided to ship the E100 either with a touch screen or with an electromagnetic digitizer, but not both. Our review unit had the resistive touch screen that can be operated either with the supplied plastic stylus or with a finger. The stylus is a small black plastic affair that'd be right at home on a Pocket PC. It securely fits into a garage indent on the right side of the unit where it is held in place by a rubber insert.

The E100's resistive touch panel controller communicates with the processor via USB and



is very quick. A special Touchkit control panel adjustment and optimization for accurate touch performance and ease of use. The panel is quite elaborate. You can set linearization either to nine or 25 points, with 25 points offering maximum accuracy. You can also set double click time and area, beeps, auto right click, cursor stabilization, and five different mouse modes (like click on touch, click on release and so on) according to personal preference. I found it particularly nice that I could set the panel so a right mouseclick worked like with an active digitizer: tap and hold.

If you intend to operate the E100 primarily with your fingers, you can set it so that the driver stops reporting points when movement is within a pre-defined range. This way the cursor will not jump around when the same point is touched again or when you move the stylus within a small area.

The Touchkit panel also offers extensive edge compensation controls. With touch screens and digitizers it can be difficult to touch or select items along the edge of the screen, and especially so when the LCD display runs all the way to the kind of thick protective

# REVIEW: GETAC E100 Rugged Tablet PC

bezel most rugged slate have. The E100 touch panel allows you to precisely define edge compensation for all four sides, i.e., set it so the cursor thinks the edge is either farther away or closer in. Precise configuration can make for optimal usability and responsiveness in touch applications.

Another quality of this touch screen is that it does not introduce any optical artifacts or distortions at all.

## Design and construction

As stated, the E100 is a small and compact machine. It measures 11.1 x 7.2 inches and is an inch and a quarter thick. Our review unit weighed exactly 3.25 pounds. Its magnesium-alloy housing is black in the rear and a warm gray in the front. The finish is matte textured in the rear and a very fine powder coat in the front. The overall look is defined by four thick rubber bumpers on the corners. They extend 3/8th of an inch on the sides, top and bottom, and also a good 1/8th of an inch above the front and rear surface. While not as elegant as fully integrated bumpers, these very clearly provide a lot of extra protection.

Now let's look at the four sides of the Getac E100:

On the left side is a RJ45 Gigabit LAN connector and two USB 2.0 ports. All have separate rubber plugs. These ports are fairly deeply recessed, which means that some USB jacks and keys may need a short USB adapter cable with a slender jack.

On the right side is an indent that serves as a garage for the 4-inch-long black plastic stylus. There is a string hole for the stylus

tether should you want to use one.

Also present is a Kensington lock slot that lets you physically secure the computer with a Kensington wire cable.

On top is the audio jack, protected by its own rubber plug. Next to it is a compartment that can accommodate a Smart Card as well as a PC Card or ExpressCard (both ExpressCard/54 and the narrow ExpressCard/34 are supported). It is protected by a plastic door with a thick rubber seal.

On the bottom you find the power connector, protected with a door with integrated rubber plug. There are two external antenna pass-through connectors, one for GPS and one for 3G radio. Between the antenna connectors is a 60-contact surface docking connector. Its pinless design means longer life.

All the hinged protective plugs are made of tough plastic and attached to the unit with small screws. If they get damaged they can easily be replaced. The hinged plugs all have a soft rubber seal. Push them into place and they form a very effective friction seal. All covers are marked with the standard symbols for the ports they cover so they can easily be identified.

The backside of the E100 is devoid of doors and compartments. There is no externally accessible memory expansion slot, no removable hard disk, and since the E100 does not have (or need) a fan, there is no heat exchanger or fan cover either. The only thing removable from the backside is the door to the battery compartment. It is held in place by four thumbnail (or coin) screws. A rubber seal prevents dust and



## GETAC E100

**Type:** Rugged Tablet PC

**Housing:** Full magnesium alloy case

**Processor:** 800MHz Intel A110 with 400MHz FSB and 512KB L2 cache

**OS:** Windows XP Professional Tablet PC Edition

**Memory:** 512MB DDR2 533MHz, expandable to 1024MB

**Slots:** 1 PC Card Type II/Express Card34/54, SmartCard

**Display:** 8.4" SVGA (800 x 600) TFT or 12.1"; optional 800 nit display

**Digitizer/Pens:** Touch screen (active digitizer optionally available)

**Keyboard:** Optional external USB keyboard

**Storage:** Shock-mounted 4200rpm 100GB 1.8" embedded hard disk

**Size:** 11.1 x 7.2 x 1.25"

**Ruggedness:** IP54, 32 to 131 F (low temperature option 4 to 132 degrees F), MIL-STD-810F tested: vibration (514.5), humidity (507.4), shock/drop (516.5), thermal shock (503.4); Regulations: various FCC, UL, TUV, CE, CB

**Weight:** 3.25 lbs. with battery, as tested

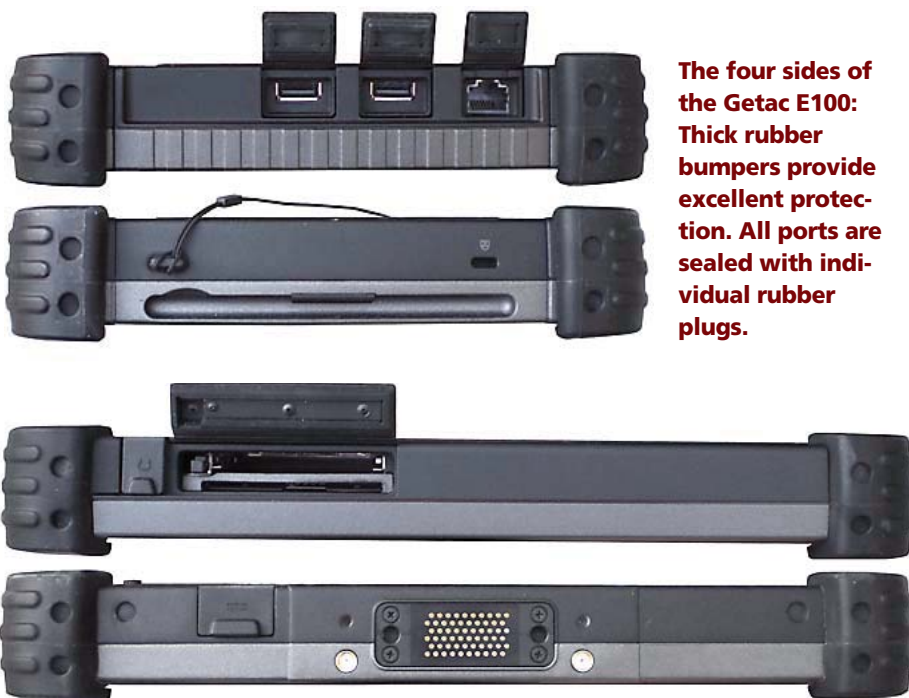
**Power:** 7.2 Volt/5,200mAh Li-Ion 37.5 watt-hour ("up to 5 hours"); optional add-on 7,800mAh battery

**Communication:** Ralink USB 802.11b/g, Bluetooth; optional EV-DO, GPRS/EDGE/UMTS/WCDMA/HSDPA, GPS, "mission boxes" with RFID, barcode, mag stripe

**Interface:** 2 USB 2.0, RJ45 Gigabit LAN

**Price:** Inquire

**Contact:** GETAC  
www.getac.com • 1-866-GO-GETAC



**The four sides of the Getac E100: Thick rubber bumpers provide excellent protection. All ports are sealed with individual rubber plugs.**

water from entering. The picture below shows the 5.2 volt/5,200mAh Lithium-Ion battery with the cover removed. Two more thumbnail-screws secure the battery. There is also a battery gauge that shows charge status upon pressing the button next to it. This comes in handy when you carry spare batteries around.



The E100's hard disk is shock-mounted somewhere inside the unit. Getac chose a 1.8-inch Toshiba MK1011GAH embedded 100GB disk that weighs no more than two ounces. Specially designed for small form factor devices (including iPod class devices), this 4,200 rpm drive uses perpendicular magnetic recording, a technology that can triple the storage density compared to the common longitudinal recording. Its very low power consumption of around one watt for reading and writing operations fits in well with a mobile devices where battery life matters. Getac also sells the E100 with lower capacity 60 and 80GB drives.

## Numeric keypad and function keys

To the right of the display is a keypad arrangement that can work in conjunction with touch screen input or be the primary input method.

On top is the on/off key with an indicator light on the left, and next to that, on the right, the light sensor that can adjust backlight brightness.

Below that are three keys: function, keypad lock, and menu. The "menu" key brings up the OSDC utility, a very handy full-screen panel that easily lets you see and set functions.

Under this trio of round keys are three indicator lights for wireless (green for LAN, amber for WWAN), battery charge and disk activity. If the optional hard disk heater is installed, the disk indicator lights red when the heater is on, which happens when the machine is booted at temperatures below 40 degrees Fahrenheit.

The main part of the pad is taken up by a standard numeric keypad that provides a means for rapid data entry.



The function key toggles on and off. With it on, the keypad keys work as follows:

- "1" switches the touch screen on and off,
- "2" issues a right mouseclick,
- "4" sets the screen backlight to manual, auto or maximum brightness,
- "7" rotates the display counter-clockwise by 90 degrees,
- "8" turns the keypad backlight on and off,
- "0" does an Esc, and
- "Del" issues an Alt-Ctl-Del command.

The only problem here is that the blue function icons on the keypad buttons are tiny and very hard to make out, especially in dim light or with the keypad backlight on.

Below the keypad is a navigation diamond that is also used to control brightness and volume.

Function and left/right arrow on the navigation diamond steps through brightness levels in 60 increments. Function up/down raises and lowers audio volume in 25 increments.

All keys have sort of a liquid gel domed surface that makes them grippy, but light can reflect of it. When depressed, the keys provide tactile feedback as well as a clearly audible mechanical click.

## Wireless and expansion

As is, the Getac E100 comes with a Bluetooth 2.0 EDR (Enhanced Data Rate) module and 802.11b/g WiFi. WiFi uses a RaLink module, but does not come with the RaLink software utility. Instead, the E100 uses the standard Windows Wireless Network utilities.

An integrated GPS receiver is optionally available. I installed Google Earth to see if it would recognize the internal GPS, but, sadly, the Google Earth GPS option is only available for paying Google customers.

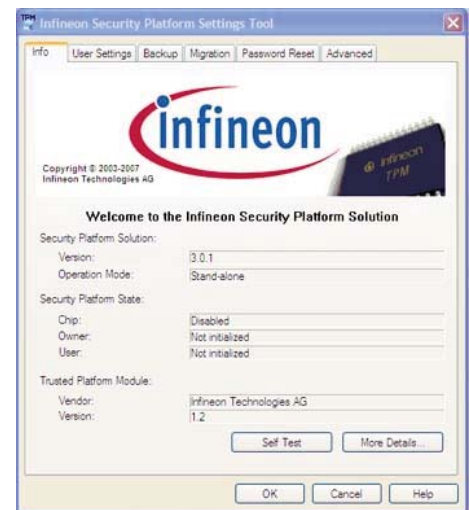
For Wide Area Network communication, there are CDMA/EVDO/1xRTT (Sprint, Verizon, etc) and HSDPA/UMTS/EDGE/GSM (AT&T, T-Mobile, etc) options.

As far as expansion goes, there is a combination PC Card and ExpressCard slot. This means the E100 can accommodate a large variety of PC Cards and card formats that fit into a PC Card adapter. It also supports both the 54mm and the 34mm ExpressCard standard.

The unit also has a Smart Card reader in the same compartment as the PC Card slot.

## Security

As part of its security, the Getac E100 uses Trusted Platform Module (TPM) hardware to create and manage computer-generated digital certificates. Combined with software, these certificates can be used to:



- Send and received secure email,
- Set up the web browser for client identification,
- Sign Microsoft Word macros,
- Encrypt individual files or entire folders, and,
- Create secure network connections.

To use TPM, you have to enable TPM support in the BIOS and then configure the system with the supplied Infineon Security Platform Settings Tool (shown above).

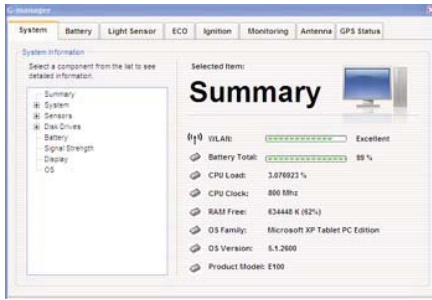
The Infineon setting tool is a wizard that guides you through the entire process from initial user settings where you set your basic password, configure secure email and encryption, and manage certificates; to making backups of all the security settings, secure drives, and credentials; to migration of security credentials from one platform to another; password resets; and advanced topics like owner passwords, enhanced authentication, emergency recovery, and system and user-specific security policies.

All of this can get pretty involved. Some users may never implement TPM or even passwords, whereas others may set up their units in accordance with their company's IT security procedures, or they may configure an individual system for maximum security.

Over all this, don't forget physical security and get a Kensington locking cable to use with the Kensington slot on the right side of the unit. It is inexpensive insurance against theft.

## Getac G-Panel

The Getac E-100 comes with a number of special utilities and helper apps that make using the unit quicker and simpler. For example, instead of going to bring up the standard Windows control panels, which can be a pain if you're using your fingers to operate the slate, the Getac G-Manager combines a variety of functions into one tabbed utility.



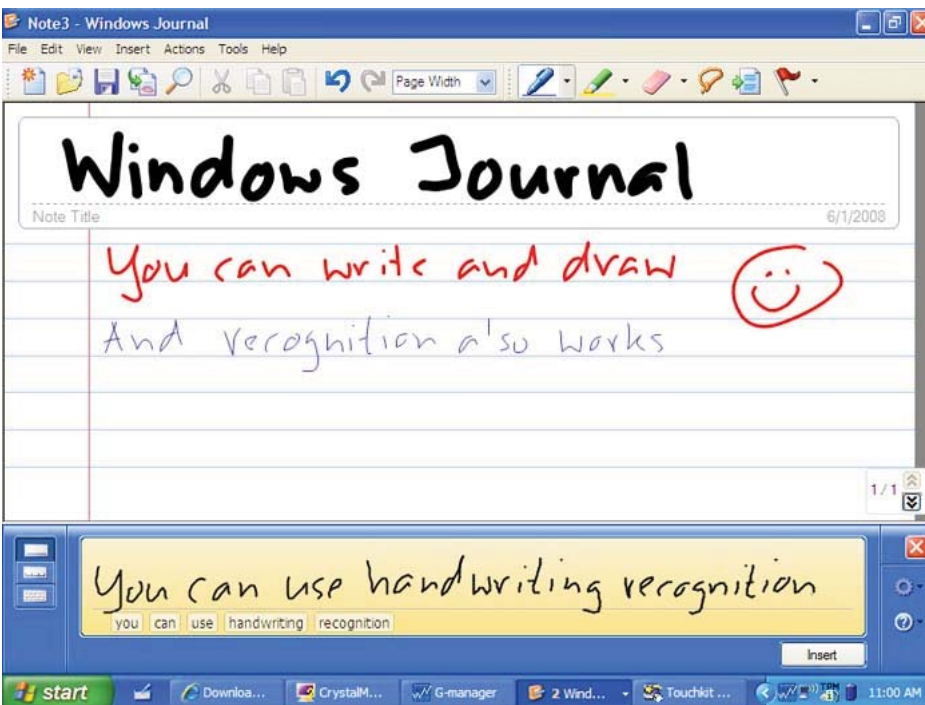
- **Summary** provides a one-look summary of all major data, including battery status, CPU load, wireless LAN signal strength, free RAM and so on. You can also drill down for more detailed and technical data.
- **Battery** shows % left in a large numeral, plus just about any other battery statistic you may want. It also shows the current power consumption. With the backlight at maximum, the reading was 14.0 watts, with the backlight at minimum that dropped to 9.8 watts.
- **Light Sensor** shows you the profile chosen (normal, bright, dark). It also shows environment illuminance in Lux as measured by the light sensor.
- **ECO** displays and controls power savings settings. You can customize the settings and even have certain features such as Bluetooth, WiFi or the touch screen turned off.
- **Ignition** lets you set the shutdown delay for vehicle-mounted and -powered units when the vehicle's engine is stopped.
- **Monitoring** lets you graphically view a

- dozen parameters. They are superimposed on the screen along the right edge.
- **Antenna** controls antenna behavior when docked.
- **GPS Status** shows satellites and summary GPS data.

### The OSDC Utility

The OSDC utility is another very handy screen that easily lets you see and set functions. Everything is very large so you can see it even under bad lighting conditions and so you can operate it with your fingers. There are also five "Quick Buttons" that can be programmed to bring up whatever the user needs.

- **RF** lets you quickly turn wireless on and off.
- **ECO** switches the system power saving mode on and off.
- **Docking** shows "IN" if the tablet is docked. You can turn off power to the dock even with the E100 inserted.
- **Backlight** cycles through normal, maximum and auto backlight.



- **Rotate** rotates the display counter-clockwise in 90 degree increments.
  - **Display** cycles through LCD, external display, and both if an external display device is connected to the dock.
- On the right side are handy sliders for brightness and volume, and along the bottom are five programmable soft buttons that can launch applications or trigger other events.

### Tablet PC functionality

The Getac E100 uses the Tablet PC Edition of Windows XP (it is also Vista ready). As such, it has all the special pen and ink utilities that add a whole new dimensions to computing, such as Windows Journal. Electronic ink is a good way to quickly annotate, doodle, edit, or highlight.

However, as far as all that Tablet PC functionality goes, those who want to take full advantage of things like electronic ink for drawing or jotting down notes in Windows Journal should probably consider the electromagnetic digitizer version of the E100. The touch screen is primarily designed for tapping and touching. You can draw on it, but handwriting recognition works as well (see example in the input panel below), but not as well as with the electromagnetic digitizer.

You can optimize the touch screen for drawing by disabling cursor stabilization in the touch control panel and also set the Constant Touch Area as small as possible.

### Ruggedness

The Getac E100 is a rugged computer capable of absorbing rough handling and demanding environmental conditions. The magnesium-alloy housing with its large protective rubber bumpers on all four corners makes the unit virtually immune to casual damage. We especially appreciate the thick bumpers as they not only provide excellent impact protection, but also keep the machine from getting scratched. That's because no matter how you sit the unit, it always rests on the rubber bumpers and never on the metal surface itself.

As for environmental specs, the standard E100 has an operating temperature range of 32 to 140 degrees Fahrenheit. A low temperature (4 to 132 degrees Fahrenheit) is available. Getac does not supply a drop spec in feet, but mentions MIL-STD-810F, Method 516.5. That usually implies 26 4-foot drops as MIL-STD-810F says, "Levels for this test were set by considering how materiel in the field might commonly be dropped. (For example, a light item might be carried by one man, chest high; thus it could drop 122 cm (48 inches)."

According to Getac, operating and storage humidity, thermal shock, vibration, mechanical shock, crash shock, solar radiation, low

pressure, and salt fog resistance were all tested according to methods mandated in MIL-STD-810F.

Getac also lists compliance with a variety

of governing standards and regulations in various markets. These can be difficult to summarize in a review and they also vary depending on markets. Inquire with Getac.

Sealing is at IP54 level, where the “5” means the unit is protected against dust, and the “4” means it is protected against water spray from all directions.



## Summary: GETAC E100

The Getac E100 replaces the somewhat larger Pentium M-based CA27 in Getac's lineup. The new tablet is much lighter, weighing just over three pounds. It also has an integrated numeric keypad and additional hardware keys, allowing rapid data entry in the field—a definite plus.

Despite its light weight, a sturdy magnesium-alloy housing and ample protection via four thick rubber bumpers provide exemplary ruggedness. The computer is also properly sealed against dust and water. Almost all ports have their own protective hinged rubber plugs that can easily be

replaced should they get damaged.

The E100's 800 x 600 pixel SVGA display offers very good sunlight viewability that can be enhanced with an optionally available high-bright (800 nits) backlight. Even without the option the screen is more readable in sunlight than most.

The standard E100 comes with a very configurable, speedy touch screen that lends itself to operation with a stylus or with fingers. Those who want to take full advantage of inking and other pen-specific capabilities of the Windows XP Tablet PC Edition may want to opt for the also available elec-

tromagnetic digitizer.

In order to facilitate light weight and decent battery life (up to four hours in our tests), Getac chose the very energy-efficient Intel A110 chip. While providing battery life and the ability to run without a fan, this is not a high performance chip and customers should determine if it's quick enough for their intended applications.

Overall, the E100 provides plenty of functionality and expansion potential in a handy, lightweight tablet that offers good battery life and excellent sunlight readability.

— Conrad H. Blickenstorfer